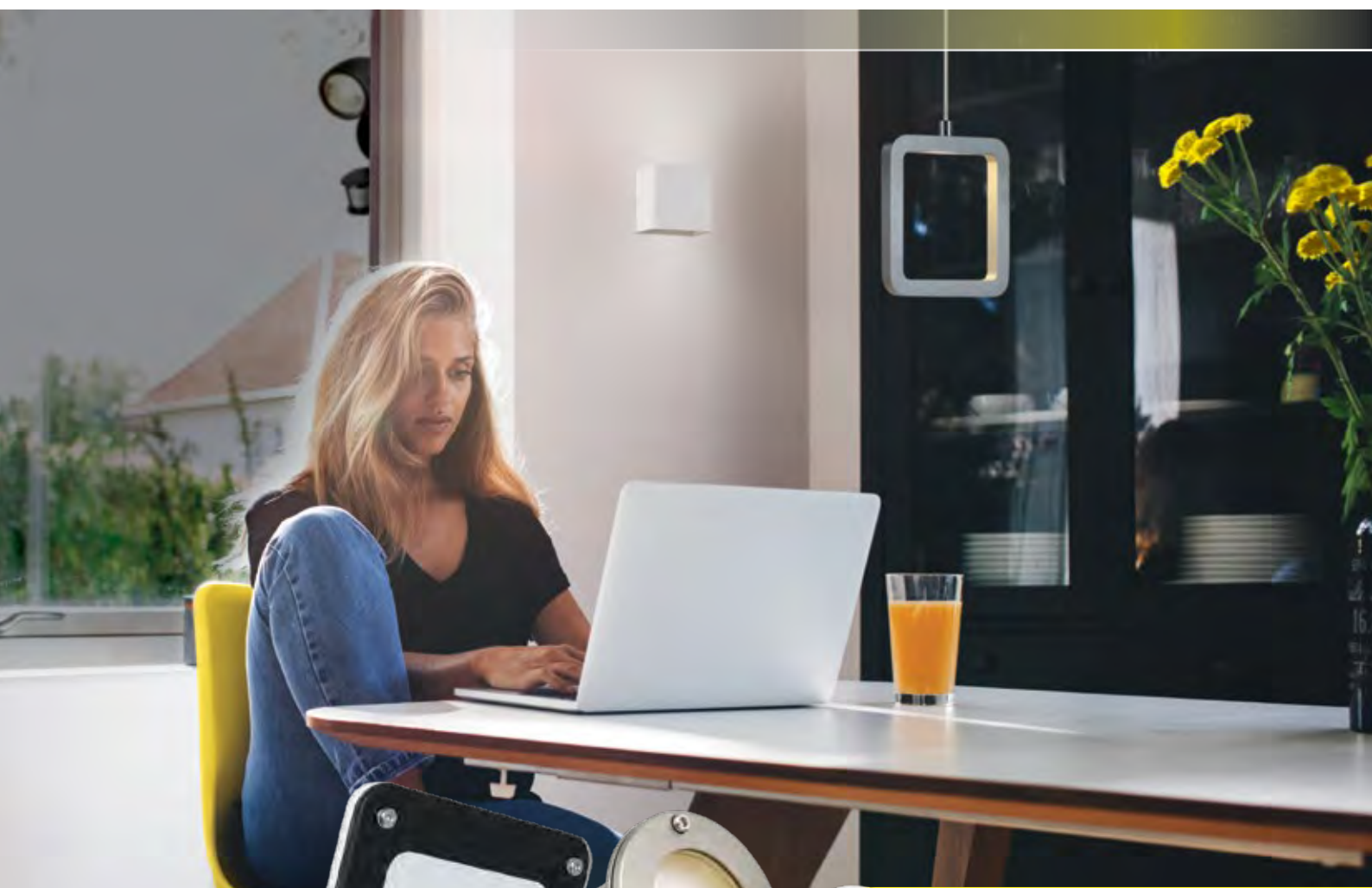




A brand of  legrand®

LED LIGHTING



BRIGHT
STYLISH
EFFICIENT

2018 - EDITION 5



CONTENTS

LED LIGHTING EXPLAINED	4
LED LIGHTING FIXTURES	6
INDOOR	
DOWNLIGHTS	8
PANEL LIGHTS	28
OYSTER LIGHTS	30
SPOTLIGHTS	36
PENDANT LIGHTS	38
UP/DOWN LIGHTS	42
STRIP LIGHTS	46
BATTENS	48
OUTDOOR	
DECK LIGHTS	54
STEP LIGHTS	56
STARLIGHTS	58
UP/DOWN LIGHTS	60
ADJUSTABLE LIGHTS	70
BUNKER LIGHTS	76
FLOODLIGHTS	84
WORKLIGHTS	100
DIMMERS AND LED COMPATIBILITY	102
DOWNLIGHT ACCESSORIES	104
LIGHTING SENSORS	104
INDEX OF PROTECTION	105
LED LIGHTING GLOBES	106
LED GARDEN LIGHTING	120
BENEFITS	122
SPOTLIGHTS	124
POND SPOTLIGHTS	136
BOLLARDS	140
WALL & STEP LIGHTS	144
DECK LIGHTS	150
TRANSFORMERS	154
CABLE & TRANSFORMER CONFIGURATION CHART	158
CABLES	160
ACCESSORIES	162

LED LIGHTING EXPLAINED

LIGHT COLOUR

Expressed in Degrees Kelvin (K), light colours are the key to determining the mood of a room.

WARM WHITE	DEGREES	2700-3000K
	DESCRIPTION	SOFTER, WARMER LIGHT Comparable to traditional incandescent lighting. Preferred in cooler climates
	ROOM	Bedroom, living room, bathroom, kitchen
COOL WHITE	DEGREES	4000K
	DESCRIPTION	NEUTRAL LIGHT Used for task lighting and preferred in warmer, tropical climates
	ROOM	Laundry, garage, study, bathroom, kitchen

AVERAGE LAMP LIFE

LED 30,000 HOURS	COMPACT FLUORESCENT 10,000 HOURS	INCANDESCENT 1,000 HOURS
------------------	----------------------------------	--------------------------

DURABILITY: LEDs are very long-lasting compared to other lighting technologies, with an average 30,000 hours life expectancy. We use quality components which make our lamps even more durable, being laboratory tested and assessed at 30,000 hours life expectancy. That represents approximately 20 years based on 3 to 4 hours usage per day.

DIMMING COMPATIBILITY

Critical to a successful installation is an understanding of LED compatibility with dimmers.

HPM is one of the only major brands on the market to deliver a full solution from dimmers to drivers and LED fixtures. Choose the winning combination of HPM LED fixtures and HPM or Legrand dimmers to ensure superior performance – including smooth dimming with no flickering, reliability and long life.



LIGHT PERFORMANCE

LIGHT OUTPUT	INCANDESCENT	HALOGEN	CFL	LED
220 lm	25W	18W	5-7W	3W
420 lm	40W	28W	7-8W	4-5W
720 lm	60W	42W	11-12W	6-8W
930 lm	75W	52W	13-18W	9-13W
1300 lm	100W	70W	18-23W	16-20W

LUMINOUS EFFICACY (lm/W)

Picking a lamp fixture based only on wattage or physical size could result in the wrong choice: Wattage (measured in W) represents the power consumed by the luminaire. The actual output of a lamp is measured in lumens (lm): the more lumens, the more light emitted by the luminaire. A smart criteria for determining the efficiency of a light fixture is its lumens/Watt ratio, which represents how much light the fixture delivers versus what it consumes to perform. This value is called luminous efficacy, and proves LED lights are more efficient than other light technologies.

COLOUR RENDERING INDEX (CRI)

CRI measures how well a lamp makes colours appear. CRI scores light sources from 1 – 100: a high CRI means that the eye can pick up slight variations in colour, making details in an interior appear sharper and more vibrant. For outstanding colour rendering, opt for our Dalia series which boasts a very high 92 index.

Our downlights range from 80 to 92, to enhance skin tones, hues and textures in rooms.

BEAM ANGLE

The light effect from a luminaire is determined by its beam angle. That is the shape and direction of light generated by the lamp. Most conventional fixtures deliver a focused light distribution at 35-60° beam angle, but LED technology can go well above those values, while still maintaining a fair pool of light.

Our lights deliver beam angles ranging from 80 to 120° to ensure a beautiful light is spread throughout a room.

OUR QUALITY PROMISE



DIMMING COMPATIBILITY

Many of our lights are capable of being dimmed effectively. For optimum dimming performance and to reduce flickering, use HPM or Legrand dimmers. See pages 102-103 for more details.



INSULATION RATING

All recessed luminaires included in this brochure have an insulation rating of IC, IC-F, IC-4, CA80 and CA90. This means insulation may abut or cover the LED luminaire.



NATA ACCREDITED LABORATORY

To ensure the highest possible quality assurance standards all HPM lighting fixtures and lamps are tested in our NATA accredited laboratory in Sydney.



IP RATING

All our products are assured against insects and moisture, with IP ratings ranging from IP42 to IP65. See IP chart on page 105 for more information.

LED LIGHTING FIXTURES



RIBA STRIPLIGHT

Where other lights fear to tread the Riba calls home. Whatever your lighting challenge, the Riba is equipped to match it – and always with style to spare. Be it a confined space or delicate mood lighting, satisfaction is assured.



Main applications

Under cabinets, entertaining areas, kitchens, home theatres

Power	7W	
Lumen output	Warm White	600 lm
Efficacy	Warm White	50 lm/W
Colour temperature	Warm White	3,000K
CRI	80+	
Lifespan	30,000 h	
Package contents	LDR01N700/36: 1m LED strip 7.2W & plug-in 36W transformer LSL013K: 1m LED strip with quick-connector	

Installation Starter kit (cat no LDR01N700/36) contains plug-in transformer with 1m LED strip. Additional inter-connectible 1m LED strips available (cat no LSL013K). Connect up to 5m of LED strips on one transformer. LED strips can be cut off every 10cm.

Product codes	LED striplight (1m) and transformer	LDR01N700/36
	LED striplight (1m) and quick-connector	LSL013K



QUICK CONNECT UP TO 5m

3 YEAR WARRANTY



CALLA STEP LIGHTS (2.4W)

Scale the heights of style with Calla step lights, an illuminating choice for stairwells or hallways. Whether indoor or outdoor, the Calla excels with its impressive IP65 weatherproof rating.

Main applications

Stairs, hallways, corridors



TIP

Use every second or third step, approximately 300-350mm above floor level, for the ultimate light spread



Power	2.4W	
Lumen output	Warm White	24 lm
Efficacy	Warm White	10 lm/W
Colour temperature	Warm White	3,000K
CRI	80+	
Insulation rating	IC	
Dimming	Trailing & leading edge, 2 & 3 wire	
Lifespan	30,000 h	
Construction	Anodised aluminium	
Weatherproof rating	IP65	
Package contents	2.4W LED step light fixture	
Product codes	White Finish Warm White Light	LST013KWE
	Aluminium Finish Warm White Light	LST013KPS
	Driver Kit	LDR02D700/18

Installation Must be installed with driver kit LDR02D700/18. A minimum of 2 and a maximum of 6 step lights must be connected with each driver. Cable connectors provided in the kit.

Driver kit contents LDR02D700/18

Plug, lead, driver

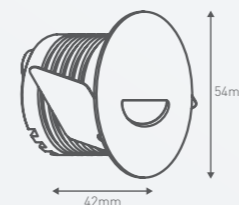


Plug coupler (x2) 100mm

Socket coupler (x2) 100mm

Jumper (x1)

Hub (x3) 300mm



ZINNIA STARLIGHTS (2.4W)

A fusion of discretion and efficiency, the Zinnia starlights are an in vogue choice for those with an eye for detail. Whether illuminating under cabinets or wall features – indoors or outdoors – the Zinnia is the epitome of versatile style. Available in white and silver. Weatherproof rated IP65.

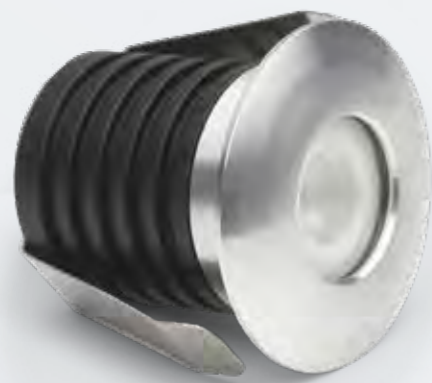
Main applications

Under cabinets, alfresco areas, home theatres. Ideal for illuminating features and creating ambience



TIP


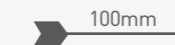



With a slim 35mm depth, Zinnia fits into almost any wall or ceiling cavity



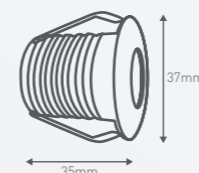
Power	2.4W	
Lumen output	Warm White	95 lm
Efficacy	Warm White	39 lm/W
Colour temperature	Warm White	3,000K
CRI	80+	
Insulation rating	IC	
Dimming	Trailing & leading edge, 2 & 3 wire	
Lifespan	30,000 h	
Construction	Anodised aluminium	
Weatherproof rating	IP65	
Package contents	2.4W LED starlight fixture	
Product codes	White Finish Warm White Light	LST023KWE
	Aluminium Finish Warm White Light	LST023KPS
	Driver Kit	LDR02D700/18

Installation Must be installed with driver kit LDR02D700/18. A minimum of 2 and a maximum of 6 starlights must be connected with each driver. Cable connectors provided in the kit.

Driver kit contents LDR02D700/18

- Plug, lead, driver 
- Plug coupler (x2) 
- Socket coupler (x2) 
- Jumper (x1) 
- Hub (x3) 

BEAM ANGLE 45°



32MM CUT-OUT

95 LUMENS

INSULATION RATING

IC ABUTTED & COVERED

IP65 WEATHERPROOF

6 YEAR WARRANTY



DIMMER COMPATIBILITY

LED FIXTURE RANGE	DIMMER TYPE	DIMMERS COMPATIBILITY	MAXIMUM LIGHTS PER DIMMER	DIMMING RANGE
DLI70 Downlights	Trailing edge only	400A3P	16	100%-1%
		400A2P	16	89%-7%
		250T	11	100%-7%
		400T	16	94%-8%
		700T	28	100%-15%
		1000T	40	100%-18%
AZA+ Downlights DLI90, DLI110, DLI125 & DLI150 Downlights	Trailing edge only	400A3P	12	100%-1%
		400A2P	12	97%-9%
		250T	8	100%-7%
		400T	12	100%-7%
		700T	21	100%-13%
Dalia Downlights Azalea Downlights Freesia Downlights Luna Panel Lights Calla Step Lights Zinnia Starlights	Trailing edge & leading edge	400A3P	8	100%-5%
		400A2P	8	100%-10%
		250T / 250L	5	100%-10%
		400T / 400L	8	100%-10%
		700T / 700L	14	100%-25%
		1000T / 1000L	20	100%-25%
DLS Downlights	Trailing edge only	400A3P	8	100%-10%
		400A2P	8	100%-10%
		250T	5	100%-10%
		400T	8	100%-10%
		700T	14	100%-25%
		1000T	20	100%-25%

Note: Not all LED lights are dimmable, refer to product details to confirm suitability for dimming.



LEGRAND EXCEL LIFE™



EM400A3P (3 wire)
EM400A2P (2 wire)
Excel Life 400VA all load 2 & 3 wire electronic push-button dimmer mechanism
White: EM400A3PWE
EM400A2PWE
Urban Grey: EM400A3PUG
EM400A2PUG



EM250T*
Excel Life 250VA 2 wire trailing edge rotary dimmer mechanism
White: EM250TRWE
Urban Grey: EM250TRUG



EM400T*
Excel Life 400VA 2 wire trailing edge rotary dimmer mechanism
White: EM400TRWE
Urban Grey: EM400TRUG



LEGRAND ARTEOR™



AR400A3P (3 wire)
AR400A2P (2 wire)
Arteor 400VA all load 2 & 3 wire push-button dimmer mechanism
White: AR400A3PMWE
AR400A2PMWE
Magnesium:
AR400A3PMMGN
AR400A2PMMGN



AR400T / AR400L*
Arteor 400VA 2 wire rotary dimmer mechanism
White: AR400TMWE
AR400LMWE
Magnesium: AR400TMMGN
AR400LMMGN



HPM LINEA™ AND EXCEL



400A2P (2 wire)
Excel or Linea and 400VA (2 wire) electronic push-button dimmer mechanism
White: 400A2PWE



250T / 250L*
Excel or Linea 250VA 2 wire rotary dimmer mechanism
White: 250LMWE 250TMWE
Also available in black & cream



400T / 400L*
Excel or Linea 400VA 2 wire rotary dimmer mechanism
White: 400TMWE 400LMWE
Also available in black & cream



700T / 700L*
Excel or Linea 700VA 2 wire rotary dimmer mechanism
White: 700TMWE 700LMWE



1000T / 1000L*
Excel or Linea 1000VA 2 wire rotary dimmer mechanism
White: 1000TMWE 1000LMWE



VIVO™



EVM400A3* (3 wire)
EVM400A2* (2 wire)
VIVO 400VA all load 2 & 3 wire electronic push button dimmer mechanism
White: EVM400A3WE,
EVM400A2WE
Grey: EVM400A3GR,
EVM400A2GR

*T = Trailing Edge, L = Leading Edge

ACCESSORIES

DOWNLIGHT EXTENSION PLATES

Cat No.	Image	Description
LEP120WE		Suitable for hole cut-outs up to Ø120mm
LEP150WE		Suitable for hole cut-outs up to Ø150mm

Suitable for: DLI90, AZA+, Dalia, Azalea, and DLS series

LIGHTING SENSORS

Passive infrared (PIR) sensor

Sensitive to a person's skin temperature through emitted body radiation, in contrast to background objects at room temperature. HPM range of sensors is suitable for both indoor and outdoor for various locations throughout the house including corridors, wardrobes, secluded walkways and garages.

Whether used for extra safety around the house or for convenience indoors, these deliver great energy savings all year round.

Cat No.	Image	Description	Finish	Manual override	IP Rating	Application	Mounting type	Detection range	Detection angle	Time delay
630S01BL		180° PIR Sensor	Black	No	IP44	Indoor/Outdoor	Wall Surface Mounted	12m	180°	8s to 7min
630S01WE		180° PIR Sensor	White	No	IP44	Indoor/Outdoor	Wall Surface Mounted	12m	180°	8s to 7min
630SM01BL		180° PIR Sensor	Black	Yes	IP44	Indoor/Outdoor	Wall Surface Mounted	12m	180°	8s to 7min
630SM01WE		180° PIR Sensor	White	Yes	IP44	Indoor/Outdoor	Wall Surface Mounted	12m	180°	8s to 7min
630S02WE		360° PIR Sensor	White	No	IP20	Indoor	Ceiling Surface mounted	8m	360°	10s to 10min
630R02WE		360° PIR Sensor	White	No	IP41	Indoor	Ceiling Surface mounted	8m	360°	10s to 10min
630R01WE		360° PIR Sensor	White	No	IP20	Indoor	Ceiling surface mounted	6m	360°	10s to 15min
488TRI3W		Triscan 3-Wire Pir Sensor	White	Yes	IP66	Outdoor	Wall Surface Mounted	8m	120°	8s to 15min

INDEX OF PROTECTION

1. Protection against solid bodies and liquids: IP index of protection

Degrees of protection for enclosures of electrical equipment according to standards: IEC 60529, BS EN 60529 and NF EN 60529

First digit:

Protection against solid bodies (See AS 1939, Clause 5)

IP	Tests	IP
0	No protection	
1	Protected against solid bodies larger than 50 mm (e.g. accidental contact with the hand)	A
2	Protected against solid bodies larger than 12.5 mm (e.g. finger)	B
3	Protected against solid bodies larger than 2.5 mm (e.g. tools, wires)	C
4	Protected against solid bodies larger than 1 mm (e.g. fine tools and small wires)	
5	Protected against dust (no harmful deposit)	D
6	Completely protected against dust	

Second digit:

Protection of equipment against ingress of harmful liquids (See AS 1939, Clause 6)

IP	Tests	IP
0	No protection	
1	Protected against vertically-falling drops of water (condensation)	
2	Protected against drops of water falling at up to 15° from the vertical	
3	Protected against drops of rain water at up to 60° from the vertical	
4	Protected against projections of water from all directions	
5	Protected against jets of water (from all directions)	
6	Protected against jets of water of similar force to heavy seas	
7	Protected against the effects of immersion	
8	Protected against prolonged effects of immersion	

2. Protection IK, against mechanical impact.

According to standards: IEC 62262, BS EN 62262 and NF EN 62262

IK	Tests	Impact energy (in Joules)
IK 00		0
IK 01		0.15
IK 02		0.2
IK 03		0.35
IK 04		0.5
IK 05		0.7

IK	Tests	Impact energy (in Joules)
IK 06		1
IK 07		2
IK 08		5
IK 09		10
IK 10		20

• This table can be used to ascertain the resistance of a product to an impact given in Joules from the IK code (graduated from 00 to 10)



A brand of **legrand**



Member of:



Disclaimer: The information provided in this document is intended for informational purposes only has been prepared and reviewed with all reasonable care, believed to be correct at the time of printing. Legrand Australia and New Zealand may also make improvements and/or changes in the products, pricing and/or programs described in this information at any time without notice.

Legrand Australia

Building 4, Nexus Industry Park
43-47 Lyn Pde Prestons NSW 2170
1300 369 777
www.hpm.com.au

Legrand New Zealand

106-124 Target Road Glenfield
Auckland 0627 New Zealand
0800 476 009
www.hpm.co.nz