

# Data Sheet

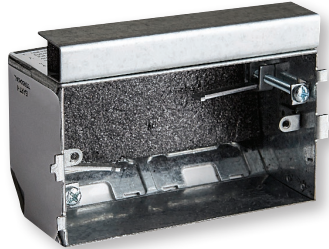
## Fire and Acoustic Rated Wall Boxes



CAT NO. 435, 435/2, CM435/2



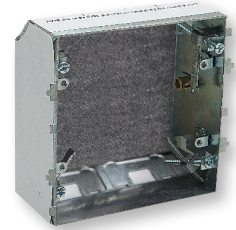
435



435/2



CM435/2

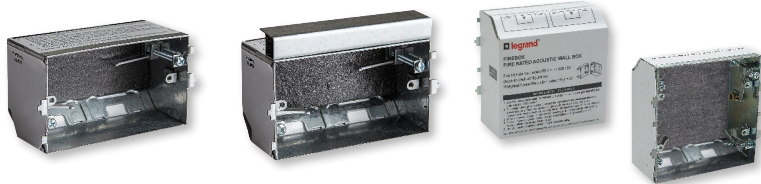


Cat No	435	435/2	CM435/2
Description	Wall Box 1 Gang Fire and Acoustic rated	Wall Box 1 Gang Fire and Acoustic rated	2 Gang Wall Box Fire and Acoustic rated
Fire resistance Level (FRL)	Back-to-back configuration: - /120/60 (1-hour applications) - /180/120 (2-hour applications) Single-sided configuration: - /120/120 (2-hour applications) - /180/180 (3-hour applications)		
Weighted Sound Reduction Index (Rw)	62		
Wall type	Suitable for 10mm to 32mm thick plaster board walls		
Material	Galvanized steel		
Cut out size	103mm x 59mm	103mm x 135mm	103mm x 103mm
Box Dimensions	103mm W x 57mm H x 51mm D	103mm W x 57mm H x 51mm D	103mm W x 103mm H x 51mm D
Mounting Centres	84mm		
Applications	Suitable for all Single switchplates or powerpoints.	Suitable for Double switchplates or powerpoints installations. Used in conjunction with Cat No 435 (Not suitable for COMO range)	Suitable for COMO Double plate devices only (ie:CM777 & CM9405F)
Compliance	AS1530.4 in conjunction with AS4072.1 (Fire rating) AS1191, AS1276.1 and ISO717.1 (Acoustic rating)		

# Fire and Acoustic Rated Wall Boxes



CAT NO. 435, 435/2, CM435/2



Fire and Acoustic rated wall box suitable for residential and commercial applications such as hospitals, hotels, public buildings and multi-dwelling apartments.

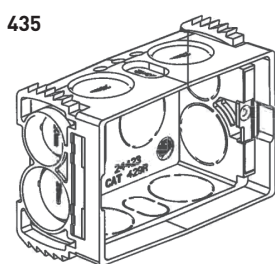
- Back-to-back configuration:
  - /120/60 (1-hour applications)
  - /180/120 (2-hour applications)
- Single-sided configuration:
  - /120/120 (2-hour applications)
  - /180/180 (3-hour applications)
- Weighted sound reduction index (Rw) 62
- 84mm centre installations
- Corrosion resistant
- Robust design
- Suitable for plaster wall 10mm to 32mm thick
- Knockouts for easy cable access
- AS1530.4 in conjunction with AS4072.1 (Fire rating)  
AS1191, AS1276.1 and ISO717.1 (Acoustic rating)

Single product			
Cat No	Dimensions	Weight	Barcode
435	120W x 70H x 60Dmm	250g	9321001392224
435/2	120W x 70H x 60Dmm	280g	9321001415220
CM435/2	112W x 105H x 60Dmm	320g	9321001435181

Inner box (QTY 4)			
Cat No	Dimensions	Weight	Barcode
CM435/2	163W x 163H x 131Dmm	1.4kg	9321001435198

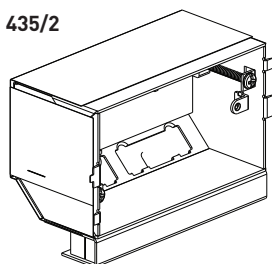
Outer box (QTY 60)			
Cat No	Dimensions	Weight	Barcode
435	380W x 310H x 330Dmm	16kg	9321001392248
435/2	380W x 310H x 330Dmm	17.8kg	9321001415237

Outer box (QTY 48)			
Cat No	Dimensions	Weight	Barcode
CM435/2	500W x 333H x 262Dmm	17.8kg	9321001435204



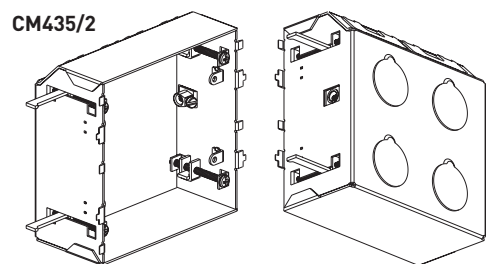
435

98mm x 62mm x 45mm



435/2

103mm x 57mm x 51mm



CM435/2

103mm x 103 mm x 51mm

Legrand – Australia  
1300 369 777  
www.legrand.com.au  
ABN 31 000 102 661

Legrand – New Zealand  
0800 476 009  
www.legrand.co.nz

Refer to your group buying office, HPM Legrand Sales Representative or HPM Legrand Sales Office for pricing.

Please note: specifications are subject to change without prior notice.