



A brand of **legrand**

VIVO™



**BOLD, STRIKING
& REFRESHING**

2019





MODERN CHOICE

**BOLD, STRIKING
& REFRESHING**

VIVOTM

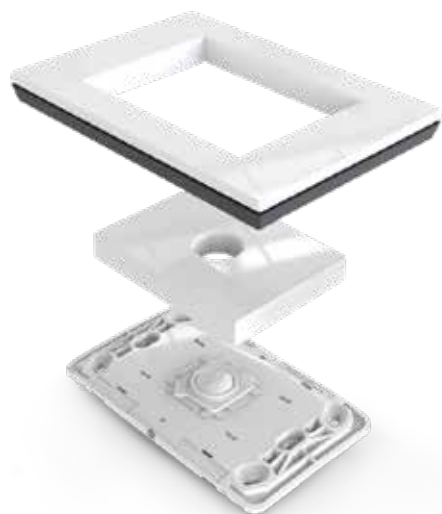
Choose the colour to suit your style

Excel VIVO™ can be customised to suit your personal taste and interiors.

Keep it simple with traditional rocker switches and white coverplates, or add a designer's edge with coloured plates to transform your home from boring to breathtaking.

FEATURES

SIMPLE, FLAT AND SQUARE



COVERPLATE FITS ALL VIVO PRODUCTS



HOW TO CREATE VIVO

COMPLETE PRODUCT

VIVO comes in a selection of already assembled switches and sockets



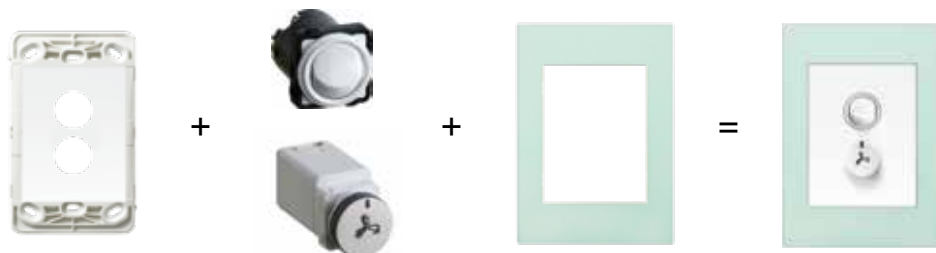
ADD ILLUMINATION

With our Illuminated LED rings, make your switches more visible at night



CUSTOMISE YOUR OWN

We sell all the components to make your own customised switch



VIVO COLOUR COLLECTION

BASICS



White



Black

METALLICS



Silver

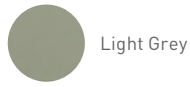


Graphite

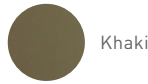


Copper

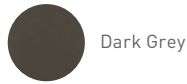
NEUTRALS



Light Grey



Khaki



Dark Grey

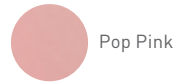
POP



Bright Red



Pop Blue

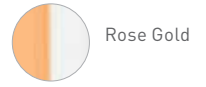


Pop Pink



Mint

REFLECTIONS



Rose Gold



Chrome



RANGE SNAPSHOT

Excel VIVO offers a wide range of electrical functions in addition to switches and sockets, including electronic dimmers, USB chargers, TV connectors, bluetooth sound system, sensors and wireless chargers.

SWITCHES

Available in 1-6 gang options. Can be mounted vertically or horizontally



Architrave
White
LNA770/1WE



Rocker
White
EV770/1WE + EVPLPI



Rocker
Grey
EV770/3GR + EVPLMT



Rocker
White
EV770/5WE + EVPLKH

POWERPOINTS

Choose from a complete range of powerpoints for every position



Single Powerpoint
White
EV787WE



Double Powerpoint
White
EV777WE + EVPLBL



Powerpoint with Extra Switch
Grey
EV777XGR + EVPLMS



Double Powerpoint
with Extra Switch
White
EVV777XWE



Powerpoint & USB Charger
Type A & C
Grey
EV777USB2AC6R



Powerpoint & USB Charger
Dual Type A
White
EV777USB2PSAWE + EVPLCO



DIMMERS & FAN CONTROLLERS

Choose from rotary style or electronic push-button mechanisms



Rotary Fan Controller
White
EV770/1FCWE+ EVPLLG



Rotary Style Dimmer
Grey
EV250TGR + EVPLMS



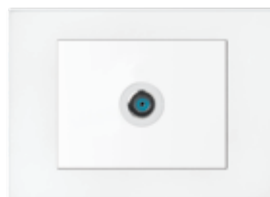
Push-button Dimmer
White
EV400PB2WE + EVPLMT

TV, PHONE & DATA

Mix and match phone, data, and TV sockets to create the combination you need in each switchplate



Phone & Data Socket
White
EV770/1RJSEWE + EVPLRD



Pay-TV Socket
White
EV770/1FOXWE



HDMI & USB sockets
White
EVHDMIUSBWE + EVPLBL

ELECTRONIC FUNCTIONS

We offer a range of electronic switches for energy savings and comfort



Programmable Timer
White
EVTDWE + EVPLBU



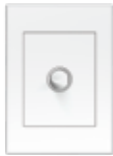
Bluetooth Sound Diffusion
White
EVBKTWE+ EVPLDG



Skirting Light with Sensor
White
EVSSENSORLIGHTWE



SWITCHES



EV770/1WE



EV770/2GR



EV770/40DPWE



EV770/3FLHWE



EVA770/1WE



EV250TWE



EV400PB3GR

| Cat. Nos | Vertical Switches | UoM | Barcode | Box Qty | Carton Qty |
|--|--|-----|---------------|---------|------------|
| Rocker Switches - Single Pole Double Throw (SPDT) | | | | | |
| EV770/1WE | Switch 1 gang 2 way 10A 240V a.c. white | EA | 9321001465461 | 5 | 60 |
| EV770/1GR | Switch 1 gang 2 way 10A 240V a.c. grey | EA | 9321001465522 | 5 | 60 |
| BUEV770/1WE | Switch 1 gang 2 way 240V a.c. white 10 Pack | EA | 9321001474845 | - | 12 |
| EV770/2WE | Switch 2 gang 2 way 10A 240V a.c. white | EA | 9321001465478 | 5 | 60 |
| EV770/2GR | Switch 2 gang 2 way 10A 240V a.c. grey | EA | 9321001465539 | 5 | 60 |
| EV770/3WE | Switch 3 gang 2 way 10A 240V a.c. white | EA | 9321001465485 | 10 | 120 |
| EV770/3GR | Switch 3 gang 2 way 10A 240V a.c. grey | EA | 9321001465546 | 5 | 60 |
| EV770/4WE | Switch 4 gang 2 way 10A 240V a.c. white | EA | 9321001465492 | 5 | 60 |
| EV770/4GR | Switch 4 gang 2 way 10A 240V a.c. grey | EA | 9321001465553 | 5 | 60 |
| EV770/5WE | Switch 5 gang 2 way 10A 240V a.c. white | EA | 9321001465508 | 5 | 60 |
| EV770/5GR | Switch 5 gang 2 way 10A 240V a.c. grey | EA | 9321001465560 | 5 | 60 |
| EV770/6WE | Switch 6 gang 2 way 10A 240V a.c. white | EA | 9321001465515 | 5 | 60 |
| EV770/6GR | Switch 6 gang 2 way 10A 240V a.c. grey | EA | 9321001465577 | 5 | 60 |
| EV770/1GMWE | Switch 1 gang 2 way 10A 240V a.c. white no cover | EA | 9321001465676 | 10 | 120 |
| EV770/1GMGR | Switch 1 gang 2 way 10A 240V a.c. grey no cover | EA | 9321001465706 | 10 | 120 |
| EV770/2GMWE | Switch 2 gang 2 way 10A 240V a.c. white no cover | EA | 9321001465683 | 10 | 120 |
| EV770/2GMGR | Switch 2 gang 2 way 10A 240V a.c. grey no cover | EA | 9321001465713 | 10 | 120 |
| EV770/3GMWE | Switch 3 gang 2 way 10A 240V a.c. white no cover | EA | 9321001465690 | 10 | 120 |
| EV770/3GMGR | Switch 3 gang 2 way 10A 240V a.c. grey no cover | EA | 9321001465720 | 10 | 120 |
| EV770/4GMWE | Switch 4 gang 2 way 10A 240V a.c. white no cover | EA | 9321001481539 | 10 | 120 |
| EV770/4GMGR | Switch 4 gang 2 way 10A 240V a.c. grey no cover | EA | 9321001481560 | 10 | 120 |
| EV770/5GMWE | Switch 5 gang 2 way 10A 240V a.c. white no cover | EA | 9321001481546 | 10 | 120 |
| EV770/5GMGR | Switch 5 gang 2 way 10A 240V a.c. grey no cover | EA | 9321001481577 | 10 | 120 |
| EV770/6GMWE | Switch 6 gang 2 way 10A 240V a.c. white no cover | EA | 9321001481553 | 10 | 120 |
| EV770/6GMGR | Switch 6 gang 2 way 10A 240V a.c. grey no cover | EA | 9321001481584 | 10 | 120 |
| EV770/40DPWE | Switch 1 gang 2 way 40A 240V a.c. double pole white | EA | 9321001465652 | 5 | 60 |
| EV770/40DPGR | Switch 1 gang 2 way 40A 240V a.c. double pole grey | EA | 9321001465669 | 5 | 60 |
| EV770/3FLHWE | Switch 3 gang 2 way 10A 240V a.c. white Fan/Light/Heat engraved | EA | 9321001465638 | 5 | 60 |
| EV770/4FLHHWE | Switch 4 gang 2 way 10A 240V a.c. white Fan/Light/Heat/Heat engraved | EA | 9321001465645 | 5 | 60 |
| Architrave Switches - Single Pole Double Throw (SPDT) | | | | | |
| EVA770/1WE | Switch 1 gang 2 way 10A 240V a.c. white | EA | 9321001465584 | 10 | 120 |
| EVA770/2WE | Switch 2 gang 2 way 10A 240V a.c. white | EA | 9321001465591 | 10 | 120 |
| EVA770/3WE | Switch 3 gang 2 way 10A 240V a.c. white | EA | 9321001465607 | 10 | 120 |
| Rotary Dimmers | | | | | |
| EV250TWE | Rotary dimmer trailing 2 wire 250VA 240V a.c. white | EA | 9321001465775 | 5 | 60 |
| EV250TGR | Rotary dimmer trailing 2 wire 250VA 240V a.c. grey | EA | 9321001465782 | 5 | 60 |
| Push-button Dimmers | | | | | |
| EV400PB2WE | Push-button dimmer universal 2 wire 350VA 240V a.c. white | EA | 9321001465737 | 5 | 60 |
| EV400PB2GR | Push-button dimmer universal 2 wire 350VA 240V a.c. grey | EA | 9321001465744 | 5 | 60 |
| EV400PB3WE | Push-button dimmer universal 3 wire 350VA 240V a.c. white | EA | 9321001465751 | 5 | 60 |
| EV400PB3GR | Push-button dimmer universal 3 wire 350VA 240V a.c. grey | EA | 9321001465768 | 5 | 60 |
| Fan Controllers | | | | | |
| EV770/1FCWE | Fan controller 3 speed white | EA | 9321001465614 | 5 | 60 |
| EV770/1FCGR | Fan controller 3 speed grey | EA | 9321001465621 | 5 | 60 |

POWERPOINTS, TV, AV & PHONE OUTLETS



| Cat. Nos | Blank Plates | UoM | Barcode | Box Qty | Carton Qty |
|-----------|-------------------|-----|---------------|---------|------------|
| EV770/0WE | Blank plate white | EA | 9321001466314 | 10 | 120 |
| EV770/0GR | Blank plate Grey | EA | 9321001466321 | 10 | 120 |

Horizontal Powerpoints

| Single Powerpoints | | | | | |
|--------------------|---|------|---------------|----|-----|
| EV787WE | Powerpoint 1 gang 10A 240V a.c. white | EA | 9321001465249 | 10 | 120 |
| EV787GR | Powerpoint 1 gang 10A 240V a.c. grey | EA | 9321001465331 | 10 | 120 |
| EV787GMWE | Powerpoint 1 gang 10A 240V a.c. white no cover plate | EA | 9321001465416 | 10 | 120 |
| EV787GMGR | Powerpoint 1 gang 10A 240V a.c. grey no cover plate | EA | 9321001465447 | 10 | 120 |
| Double Powerpoints | | | | | |
| EV777WE | Double powerpoint 2 gang 10A 240V a.c. white | EA | 9321001465232 | 10 | 120 |
| EVBU777WE | Double powerpoint 2 gang 10A 240V a.c. white 10 pack | 10PK | 9321001465317 | - | 12 |
| EV777GR | Double powerpoint 2 gang 10A 240V a.c. grey | EA | 9321001465324 | 10 | 120 |
| EV777XWE | Double powerpoint 2 gang 10A 240V a.c. with extra switch white | EA | 9321001465256 | 10 | 120 |
| EV777XGR | Double powerpoint 2 gang 10A 240V a.c. with extra switch grey | EA | 9321001465348 | 10 | 120 |
| EV777GMWE | Double powerpoint 2 gang 10A 240V a.c. white no cover plate | EA | 9321001465409 | 10 | 120 |
| EV777XGMWE | Double powerpoint 2 gang 10A 240V a.c. with extra switch white no cover plate | EA | 9321001465423 | 10 | 120 |
| EV777GMGR | Double powerpoint 2 gang 10A 240V a.c. grey with no cover plate | EA | 9321001465430 | 10 | 120 |
| EV777XGMGR | Double powerpoint 2 gang 10A 240V a.c. with extra switch grey no cover plate | EA | 9321001465454 | 10 | 120 |
| EV777USB2IWE | Double powerpoint 2 gang 10A 240V a.c. with USB 2.4A white | EA | 9321001465294 | 5 | 60 |
| EV777USB2IGR | Double powerpoint 2 gang 10A 240V a.c. with USB 2.4A grey | EA | 9321001465386 | 5 | 60 |
| EV777USB2PSAWE | Double powerpoint 2 gang 10A 240V a.c. with USB 2x2.4A white | EA | 9321001465300 | - | 12 |
| EV777USB2PSAGR | Double powerpoint 2 gang 10A 240V a.c. with USB 2x2.4A grey | EA | 9321001465393 | - | 12 |
| EV777USB2ACWE | Double powerpoint 2 gang 10A 240V a.c. with USB Type A+C 4.8A white | EA | 9321001469568 | - | 12 |
| EV777USB2ACGR | Double powerpoint 2 gang 10A 240V a.c. with USB Type A+C 4.8A grey | EA | 9321001469575 | - | 12 |

Vertical Powerpoints

| Single Powerpoints | | | | | |
|--------------------|--|----|---------------|----|-----|
| EVV787WE | Single powerpoint vertical 10A 240V a.c. white | EA | 9321001465287 | 10 | 120 |
| EVV787GR | Single powerpoint vertical 10A 240V a.c. grey | EA | 9321001465379 | 10 | 120 |
| Double Powerpoints | | | | | |
| EVV777WE | Double powerpoint vertical 10A 240V a.c. white | EA | 9321001465263 | 10 | 120 |
| EVV777GR | Double powerpoint vertical 10A 240V a.c. grey | EA | 9321001465355 | 10 | 120 |
| EVV777XWE | Double powerpoint vertical 10A 240V a.c. with extra switch white | EA | 9321001465270 | 10 | 120 |
| EVV777XGR | Double powerpoint vertical 10A 240V a.c. with extra switch grey | EA | 9321001465362 | 10 | 120 |

TV and AV Outlets

| | | | | | |
|--------------|---------------------------------------|----|---------------|----|-----|
| EV770/1CXWE | TV outlet coaxial 1 gang 75 Ohm white | EA | 9321001465812 | 10 | 120 |
| EV770/1CXGR | TV outlet coaxial 1 gang 75 Ohm grey | EA | 9321001465850 | 10 | 120 |
| EV770/1FOXWE | Foxtel TV outlet 1 gang 75 Ohm white | EA | 9321001465836 | 10 | 120 |
| EV770/1FOXGR | Foxtel TV outlet 1 gang 75 Ohm grey | EA | 9321001465874 | 10 | 120 |

Data Outlets

| | | | | | |
|---------------|--------------------------------------|----|---------------|----|-----|
| EV770/1RJ5EWE | Data outlet RJ45 Cat 5E 1 gang white | EA | 9321001465843 | 10 | 120 |
| EV770/1RJ5EGR | Data outlet RJ45 Cat 5E 1 gang grey | EA | 9321001465881 | 10 | 120 |
| EV770/1RJ6WE | Data outlet RJ45 Cat 6 1 gang white | EA | 9321001469605 | 10 | 120 |
| EV770/1RJ6GR | Data outlet RJ45 Cat 6 1 gang grey | EA | 9321001469636 | 10 | 120 |
| EV770/2RJ5EWE | Data outlet RJ45 Cat 5E 2 gang white | EA | 9321001465829 | 10 | 120 |
| EV770/2RJ5EGR | Data outlet RJ45 Cat 5E 2 gang grey | EA | 9321001465867 | 10 | 120 |
| EV770/2RJ6WE | Data outlet RJ45 Cat 6 2 gang white | EA | 9321001469667 | 10 | 120 |
| EV770/2RJ6GR | Data outlet RJ45 Cat 6 2 gang grey | EA | 9321001469698 | 10 | 120 |

ELECTRONIC FUNCTIONS & GRIDS



EV803PIRWE



EVTDWE



EVSSENSORLIGHTWE



EVHDMIUSBWE



EVBTKWE



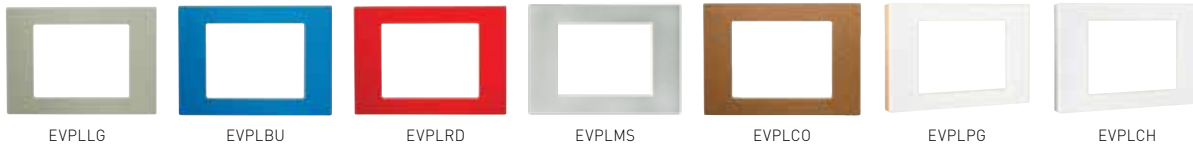
EVWPADMS

| Cat. Nos | Specials | UoM | Barcode | Box Qty | Carton Qty |
|------------------|---|-----|---------------|---------|------------|
| EV803PIRWE | PIR sensor white | EA | 9321001466338 | 5 | 60 |
| EV803PIRGR | PIR sensor grey | EA | 9321001466345 | 5 | 60 |
| EVNLIGHTWE | Night light white | EA | 9321001466352 | 5 | 60 |
| EVTDWE | Programmable (8 weekly programs) Time delay white | EA | 9321001466376 | 5 | 60 |
| EVSLIGHTWE | Skirting light white | EA | 9321001466413 | 5 | 60 |
| EVSSENSORLIGHTWE | Skirting light with sensor white | EA | 9321001466437 | 5 | 60 |
| EVSSENSORLIGHTGR | Skirting light with sensor grey | EA | 9321001466444 | 5 | 60 |
| EVSHUTTERWE | Shutter switch up/down white | EA | 9321001466451 | 5 | 60 |
| EVHDMIUSBWE | HDMI USB socket white | EA | 9321001466475 | 5 | 60 |
| EVHDMIUSBGR | HDMI USB socket grey | EA | 9321001466482 | 5 | 60 |
| EVBTKWE | Bluetooth sound kit white | EA | 9321001469810 | - | - |
| EVBTKGR | Bluetooth sound kit grey | EA | 9321001469827 | - | - |
| EVWPADMS | Wireless charging station 1A 80mm silver | EA | 9321001474531 | - | 10 |

Grids

| | | | | | |
|-------------|------------------------|----|---------------|----|-----|
| EV770/1GOWE | 1 gang grid only white | EA | 9321001465898 | 10 | 120 |
| EV770/1G0GR | 1 gang grid only grey | EA | 9321001465928 | 10 | 120 |
| EV770/2GOWE | 2 gang grid only white | EA | 9321001465904 | 10 | 120 |
| EV770/2G0GR | 2 gang grid only grey | EA | 9321001465935 | 10 | 120 |
| EV770/3GOWE | 3 gang grid only white | EA | 9321001465911 | 10 | 120 |
| EV770/3G0GR | 3 gang grid only grey | EA | 9321001465942 | 10 | 120 |
| EV770/4GOWE | 4 gang grid only white | EA | 9321001481591 | 10 | 120 |
| EV770/4G0GR | 4 gang grid only grey | EA | 9321001481621 | 10 | 120 |
| EV770/5GOWE | 5 gang grid only white | EA | 9321001481607 | 10 | 120 |
| EV770/5G0GR | 5 gang grid only grey | EA | 9321001481638 | 10 | 120 |
| EV770/6GOWE | 6 gang grid only white | EA | 9321001481614 | 10 | 120 |
| EV770/6G0GR | 6 gang grid only grey | EA | 9321001481645 | 10 | 120 |

GRIDS, COVERPLATES & MECHANISMS



| Cat. Nos | Coverplates (fits all VIVO grids) | UoM | Barcode | Box Qty | Carton Qty |
|----------|--|-----|---------------|---------|------------|
| EVPLWE | White Gloss coverplate | EA | 9321001466109 | 10 | 120 |
| EVPLGR | Grey Gloss coverplate | EA | 9321001466116 | 10 | 120 |
| EVPLLG | Light Grey coverplate | EA | 9321001466123 | 10 | 120 |
| EVPLKH | Khaki coverplate | EA | 9321001466130 | 10 | 120 |
| EVPLDG | Dark grey coverplate | EA | 9321001466147 | 10 | 120 |
| EVPLBU | Pop Blue coverplate | EA | 9321001466154 | 10 | 120 |
| EVPLPI | Pop Pink coverplate | EA | 9321001466161 | 10 | 120 |
| EVPLRD | Bright Red coverplate | EA | 9321001466178 | 10 | 120 |
| EVPLMT | Mint coverplate | EA | 9321001466185 | 10 | 120 |
| EVPLMS | Silver coverplate | EA | 9321001466192 | 10 | 120 |
| EVPLCO | Copper coverplate | EA | 9321001466208 | 10 | 120 |
| EVPLBL | Graphite coverplate | EA | 9321001466215 | 10 | 120 |
| EVPLPG | Reflection Rose Gold coverplate | EA | 9321001466222 | 10 | 120 |
| EVPLCH | Reflection Chrome coverplate | EA | 9321001466239 | 10 | 120 |

Mechanisms

| | | | | | |
|--------------|---|----|---------------|----|-----|
| EVM770WE | Switch mechanism 10A 240V a.c. white | EA | 9321001465959 | 10 | 120 |
| EVM770GR | Switch mechanism 10A 240V a.c. grey | EA | 9321001465966 | 10 | 120 |
| EVM770IMWE | Switch mechanism intermediate 10A 240V a.c. white | EA | 9321001465973 | 10 | 120 |
| EVM770IMGR | Switch mechanism intermediate 10A 240V a.c. grey | EA | 9321001465980 | 10 | 120 |
| EVM883WE | Push-button switch mechanism 3 wire white | EA | 9321001469124 | 6 | 72 |
| EVM883GR | Push-button switch mechanism 3 wire grey | EA | 9321001469131 | 6 | 72 |
| EVM400A2WE | Push-button dimmer mechanism 2 wire 350VA 240V a.c. white | EA | 9321001469148 | 6 | 72 |
| EVM400A2GR | Push-button dimmer mechanism 2 wire 350VA 240V a.c. grey | EA | 9321001469155 | 6 | 72 |
| EVM400A3WE | Push-button dimmer mechanism 3 wire 350VA 240V a.c. white | EA | 9321001469162 | 6 | 72 |
| EVM400A3GR | Push-button dimmer mechanism 3 wire 350VA 240V a.c. grey | EA | 9321001469179 | 6 | 72 |
| EVM3FCWE | Fan controller rotary 3 speed 300VA 240V a.c. white | EA | 9321001465997 | 10 | 120 |
| EVMFANKNOBWE | Fan knob white (3 pack) | EA | 9321001466000 | 10 | 120 |
| EVMFANKNOBGR | Fan knob grey (3 pack) | EA | 9321001466017 | 10 | 120 |
| EVMP5WE | Pal to saddle mechanism white | EA | 9321001466024 | 10 | 120 |
| EVMP5GR | Pal to saddle mechanism grey | EA | 9321001469728 | 10 | 120 |
| EVM770LEDWE | Switch with LED ring 10A 240V a.c. white | EA | 9321001466031 | 10 | 120 |
| EVM770LEDGR | Switch with LED ring 10A 240V a.c. grey | EA | 9321001466048 | 10 | 120 |
| EVM770TWE | Telephone outlet RJ11 Cat3 white | EA | 9321001466055 | 10 | 120 |
| EVMUSB2PSAWE | USB Charger mechanism 2X2.4A 240V a.c. white | EA | 9321001466062 | 5 | 60 |
| EVMUSB2PSAGR | USB Charger mechanism 2X2.4A 240V a.c. grey | EA | 9321001466079 | 5 | 60 |
| EVMUSB2ACWE | USB Charger type A+C 4.8A 240V a.c. white | EA | 9321001469759 | 5 | 60 |
| EVMUSB2ACGR | USB Charger type A+C 4.8A 240V a.c. grey | EA | 9321001469780 | 5 | 60 |
| EVMFFOXWE | Pay-TV Foxtel outlet white | EA | 9321001466086 | 10 | 120 |
| EVMFFOXGR | Pay-TV Foxtel outlet grey | EA | 9321001466093 | 10 | 120 |



A brand of **legrand**



Legrand Australia

Building 4 Nexus Industry Park
43-47 Lyn Pde Prestons NSW 2170
1300 369 777

www.hpm.com.au

Legrand New Zealand

106-124 Target Road Glenfield
Auckland 0627 New Zealand
0800 476 009

www.hpm.co.nz

Disclaimer: The information provided in this document is intended for informational purposes only. It has been prepared and reviewed with all reasonable care and is believed to be correct at the time of printing. Legrand Australia and New Zealand may also make improvements and/or changes to the products, pricing and/or programs described in this brochure at any time without notice.